

Nussbaum **live**



Optipress – top quality, long service life and superb reliability Five different piping networks with five different pipe gauges had to be installed in the new medical building. Plumbing contractor Paul Huser is full of praise: «No other installation system is as assembly-friendly as the Optipress from Nussbaum.»

Medical products are produced in closed clean rooms in the new four-storey building

Hägglingen, canton of Aargau

A new high-tech medical technology building equipped with Optipress from Nussbaum

The Riwisa AG plastics factory has built a unique production facility. In special clean rooms on a total surface area of 2,000 m², countless injection moulding machines were installed. With these machines, medical implants and devices, such as inhalers, can be produced on the basis of novel manufacturing concepts. The highest quality, the most efficient assembly and a persuasive service offer were decisive in the choice of the Optipress sanitary installation system from Nussbaum.

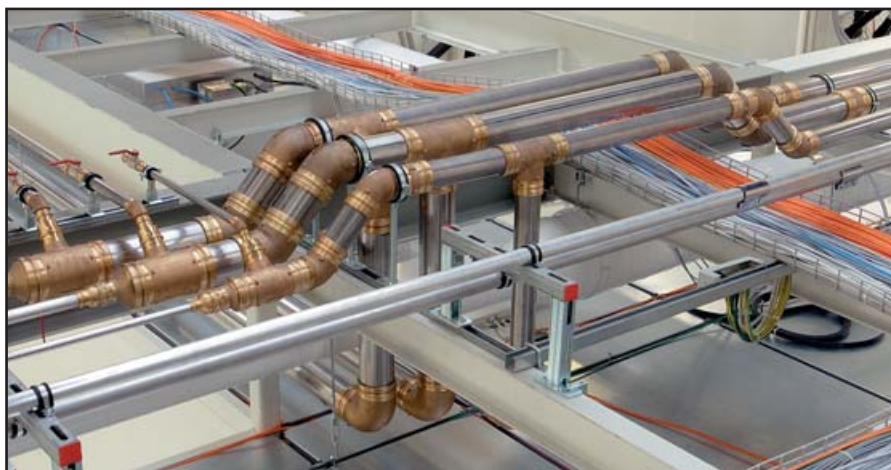
Sanitary Engineer Paul Huser: «The Nussbaum press-fit technique lets you work the most effectively»



Riwisa AG is one of the most dynamic and innovative suppliers of integrated solutions in the plastics sector

well in

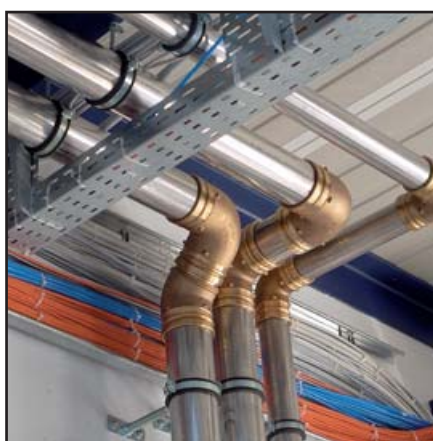
Well installed – with installation systems and fixtures from a single source. For every sanitary installation system and for every pipe gauge, Nussbaum has a comprehensive fitting program with elbows, angles, T-pieces and reducers ready, with a choice of press-fit or screw connections. A complete taps and fixtures range is available that is compatible throughout. At the Riwisa site, all draincocks, butterfly valves, pressure-reducing valves and fine filters are from Nussbaum.



The compressed air piping was constructed using Optipress XL pipes of Ø 89 mm.

So easy to assemble Before the Riwisa construction, Paul Huser AG used installation systems from other suppliers. «After my experience with this project, I have to say that Optipress was the best choice; I would not have been so quick otherwise. I am impressed with Optipress,» says Paul Huser now.

Everything with one press tool «That was simply super,» says an enthusiastic Paul Huser, owner of the sanitary installation company of the same name, «All the pressings in the entire building could be done with the same pressing tool from Nussbaum.» In fact, all press-fit systems from Nussbaum use the same tool. In no time at all, the check plates can be reset for the respective pipe gauges.



duced in the new building are inhalers for asthmatics, which are distributed by the pharmaceutical industry worldwide.

Five piping networks – one system About 2,500 m of Optipress stainless steel pipes were laid for the new production facility. The cold and hot water pipes included gauges of 42 and 35 mm. The installation of the cooling system (12°C cooling water in pipes of Ø 54 mm and 27°C cooling water in pipes of Ø 108 mm) was extremely demanding. Each of the approximately 20 injection moulding machines had to be connected to one of the two cooling water circulation systems with forward- and reverse-motion valves. «Luckily, I used Optipress,» says Paul Huser, «it would have been impossible to manage the tight radii with any other system.»

Plastic articles to perfection Riwisa AG is one of the most innovative plastics processors in Europe. The company specialises in challenging items and modules made of plastic. It is in the right position to develop and implement integrated solutions in this sector. The highly modern, new production facility was finished just in time for the company's 55-year anniversary. Nothing was left to chance. Quality, functional reliability and economy were the deciding criteria. Among the items currently pro-

Compressed air from Optipress XL pipes Compressed air must be absolutely clean when medical articles are produced in clean rooms. The air compressor and the absorption system with Ultrafilter and dryer are located in the old building.



Optipress pipes of stainless steel with fittings and fixtures of gunmetal

stalled



Optipress, the easy-to-assemble and economical sanitary installation system, is based on the most modern press-fit technology



Nussbaum places a complete and totally compatible valve program at the disposal of the plumbing contractor

Expert advice included Anyone who works with Nussbaum systems receives competent information whenever he needs to know something. The knowledgeable advice can prove to be especially important in special cases. The installation of the compressed air pipes in the new building for Riwisa brought up a whole series of questions that were quickly and competently answered by the customer consultant or the application engineer at Nussbaum.

Ordered today, delivered tomorrow The delivery service from Nussbaum was rated «absolute tops» at the construction site in Häßlingen. Anything ordered from the distribution centre in Olten before 4:00 p.m. was delivered the next day to the workshop or directly to the building site.



Ultrafilter and dehumidifier unit of the compressed air system with exhaust pipes in Optipress XL Ø 89 mm



«I am impressed with Optipress,» says sanitary engineer Paul Huser (left in photo). Next to him on the right is Hansruedi Gasser (R. Nussbaum AG) and Michael Nielsen (Head of Injection Moulding, Riwisa AG Medical Dept.)

Involved in the construction of «Riwisa medical»

Building owner: Riwisa AG, Kunststoffwerke, 5607 Hägglingen
 Architect: H.R. Kohli, dipl. Arch. HTL/STV, 8712 Stäfa
 Sanitary planner: IBN Ingenieurbüro Niedermann, 5314 Kleindöttingen
 Plumbing contractor: Paul Huser AG, 5607 Hägglingen
 Construction start: End of 1999
 Completed: Autumn 2001

Press-fit = time savings and security The Optipress connection is made in seconds. Slide the fitting onto the trimmed stainless steel pipe – press – finished. The press-fit geometry of the system's check plates produces a new shape that provides an absolutely secure connection. With the modern pressing tools from Nussbaum, all gauges from DN 12 to DN 100 can be simply and securely fastened. One only needs to set in the check plates for the respective pipe size. The built-in electronics monitor the entire press process and confirm the correct connection visually and acoustically.

The SC contour for additional security So that absolutely no pressing site can be forgotten, particularly on large construction sites, the Optipress system has additional security built in: the SC contour (SC stands for security checked; the fittings carry a green point). The SC contour is visibly not sealed as long as it has not been pressed. And, any forgotten pressings would be discovered immediately during the water test.

R. Nussbaum AG
 Foundry and valve works
 Martin-Disteli-Strasse 26
 Postfach
 CH-4601 Olten
 Tel. 062 286 81 11
 Fax 062 286 84 84
 info@nussbaum.ch
 www.nussbaum.ch

Branches in Basel, Bern, Biel, Brig, Carouge, Crissier, Dornbirn (A), Giubiasco, Kriens, St. Gallen, Wangen b. Olten and Zurich

