

## Optivis-Tec – The high-profile masking wall system

It certainly can rain in central Switzerland. When it does, you can't see much of Mount Pilatus. However, when the sun does actually shine, the view of the mountain on Lucerne's doorstep is all the more imposing. The residents of the Stirnrüti neighborhood in Horw could surely do without the excess of water that comes from the sky, but not without the water that comes out of the faucet.

The eight residential units in this multi-occupancy building enjoy a reliable, clean drinking water supply, courtesy of Nussbaum plumbing systems. These are well known for the completeness of the range and their combinability. This also applies to the ingenious Optivis-Tec masking wall and partition wall system, which simplifies the installation of all components and fittings where they are used – kitchen, bathroom and toilet.

### No such thing as «can't be done»

For Erich Troxler, proprietor of Troxler Sanitär plumbers in Willisau, this building is a typical case for Optivis-Tec. «These days, apartment owners expect their wishes to be considered right from the planning stage and certainly no later than during implementation. For that reason, the architect and utility installers must be able to react to unforeseen changes.» Optivis-Tec provides support for precisely this case. There is no such thing as «can't be done» for the craftsman. Optivis-Tec is made up of profile rails and corner connectors, which facilitate the placement and installation of sink, bathtub and toilet modules, flush-fitting valves, water meters and other fittings with no problem in virtually any construction situation. In fact, Optivis-Tec is capable of being used as a stand-alone, room-delineating element.



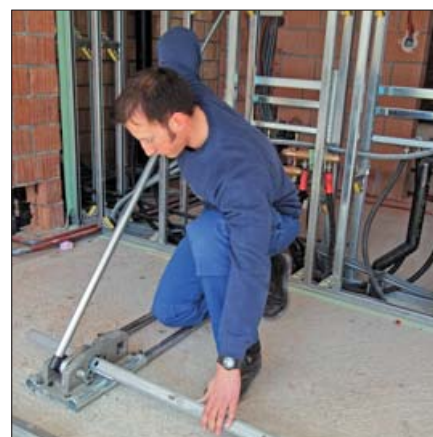
### Fits like a glove

The 5-meter rails are cut exactly to size at the installation site, using the system rail punch. The corner connectors can be adjusted at any time to enable the existing space to be utilized precisely to the millimeter. This system mobility and flexibility makes life simple for the plumber, even where niches or openings are required, for example in water riser zones or when installing mirror-fronted cabinets.

### Practically no waste

Optivis-Tec is not just economic on the use of space, but also with the system elements themselves. Rail remainders from one installation can be used in the next one. The

rail punch is also suitable for unplanned cutting of screw holes, thus greatly increasing the adaptability of the system.





*Erich Troxler (Proprietor) and Daniel Peter (Chief Installation Engineer) of Troxler Sanitär Willisau with Andreas Gasser (R. Nussbaum AG, Olten) posing in front of the impressive view.*

## List of contractors

Developer:

EG Waldhaus, Domo AG, Horw

Architects:

CAS Chappuis Aregger Solèr AG,  
Graduate Architects ETH HTL SIA,  
6460 Altdorf

Plumbing installation:

Troxler Sanitär,  
Solartechnik, Heizung,  
6130 Willisau

Start of construction:

November 2004

Completion:

Autumn 2005

## Practically no mistakes

The mobility and adaptability of Optimis-Tec is matched by the simplicity and standardization of its assembly. Daniel Peter, Chief Installation Engineer of Troxler, says: «I can always work to the same principle and with the same distances, and even allow an apprentice to work on his own. Mistakes are practically non-existent, and if any are made, they are easy to correct.» Where additional braces or fasteners are required (e.g. for excess heights), it is quick and easy to install a profile piece with connectors.

the outset, Troxler opted for the Nussbaum product range and has never been disappointed. Erich Troxler explains this satisfaction with a shared business philosophy: «Our aim is to go to the construction site just once – for the installation. The material and work performed must be absolutely flawless to eliminate the need for any follow-up visits.»

## The company

Troxler Sanitär, Solartechnik, Heizung in Willisau was established in 1990 and employs six people. From



## R. Nussbaum AG

Foundry and valve works

Martin-Disteli-Strasse 26

Postfach

CH-4601 Olten

Tel. 062 286 81 11

Fax 062 286 84 84

info@nussbaum.ch

www.nussbaum.ch

Branches in Basel, Bern, Biel,  
Brig, Carouge, Crissier, Dornbirn,  
Giubiasco, Kriens, St. Gallen,  
Trimbach and Zurich

